

FOR SALE

3635 AV. JEAN-BÉRAUD, APT. PH1206
LAVAL, QC

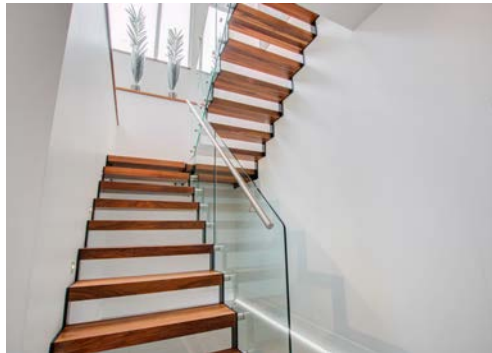
ROYAL LEPAGE
Du QUARTIER



2 STOREY CONDO
ASKING PRICE: \$1,149,000.00

KARIM DALATI
Real Estate Broker
514.812.5555
kdalati@royalpage.ca
www.kdalati.com

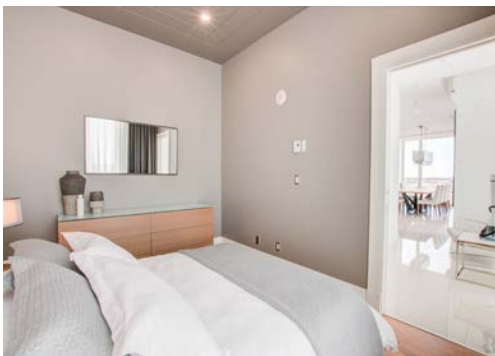
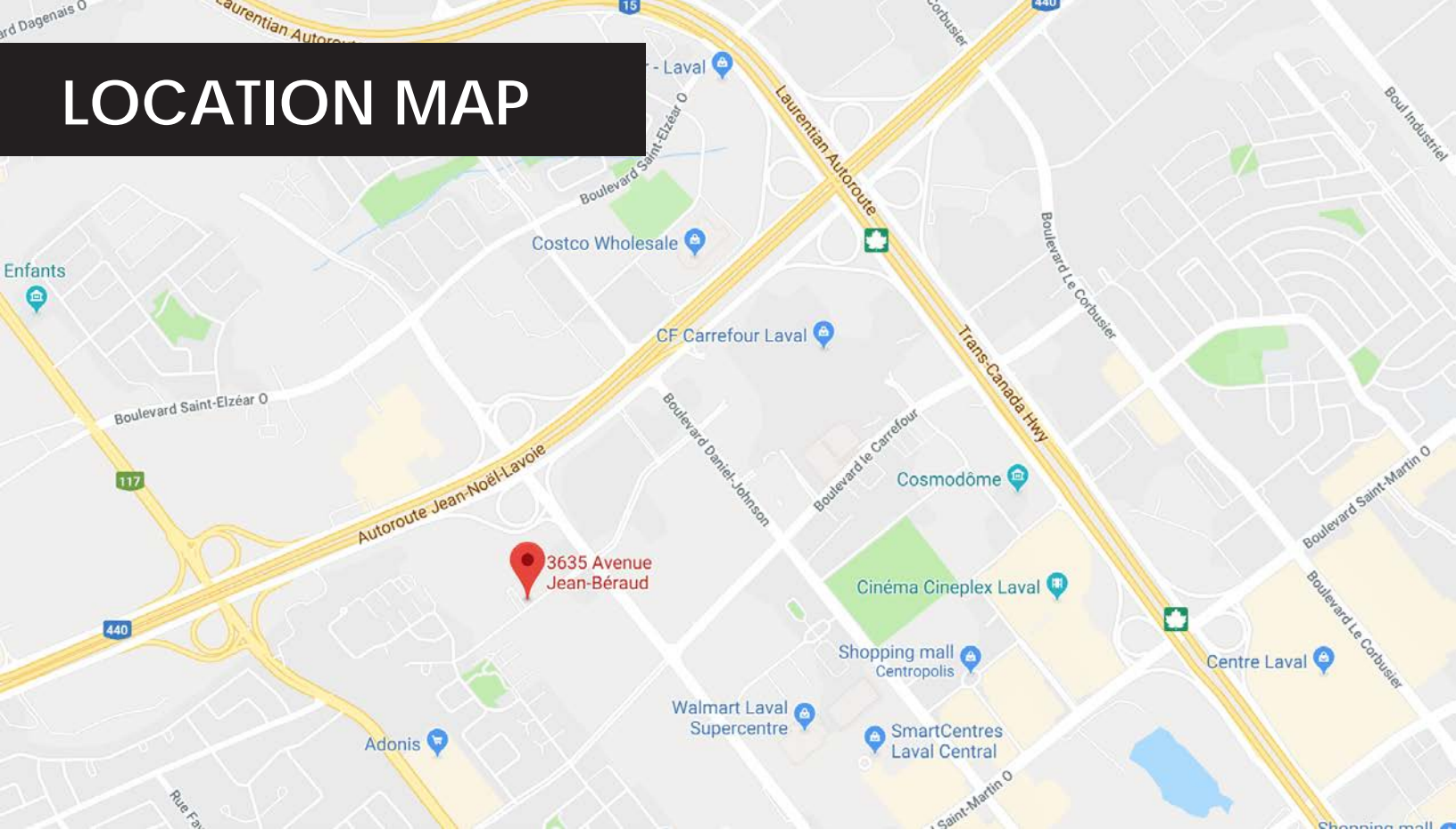
Royal LePage Du Quartier, Real Estate Agency
6971 Chemin de la Côte-de-Liesse #C
St-Laurent, QC H4T 1Z3
T 514.419.9888 | F 514.419.7289
www.royalpagecommercial.com



BUILDING FEATURES

- Wonderful 2 storey condo
- This unit is a corner one, with windows all around and very spacious and very trendy
- Magnificent panoramic view with a big terrace
- Main for with high ceilings, 2 bedrooms, 2 bathrooms, big walk-in in the master
- You will love the decor and layout
- 2 garage spaces

LOCATION MAP



PROPERTY PHOTOS

